

## miniCAD5 QuickStart Tutorial

### Stage: 4

### Plot the Job

**Aim:** Plot the job to both printer / plotter and DXF file.

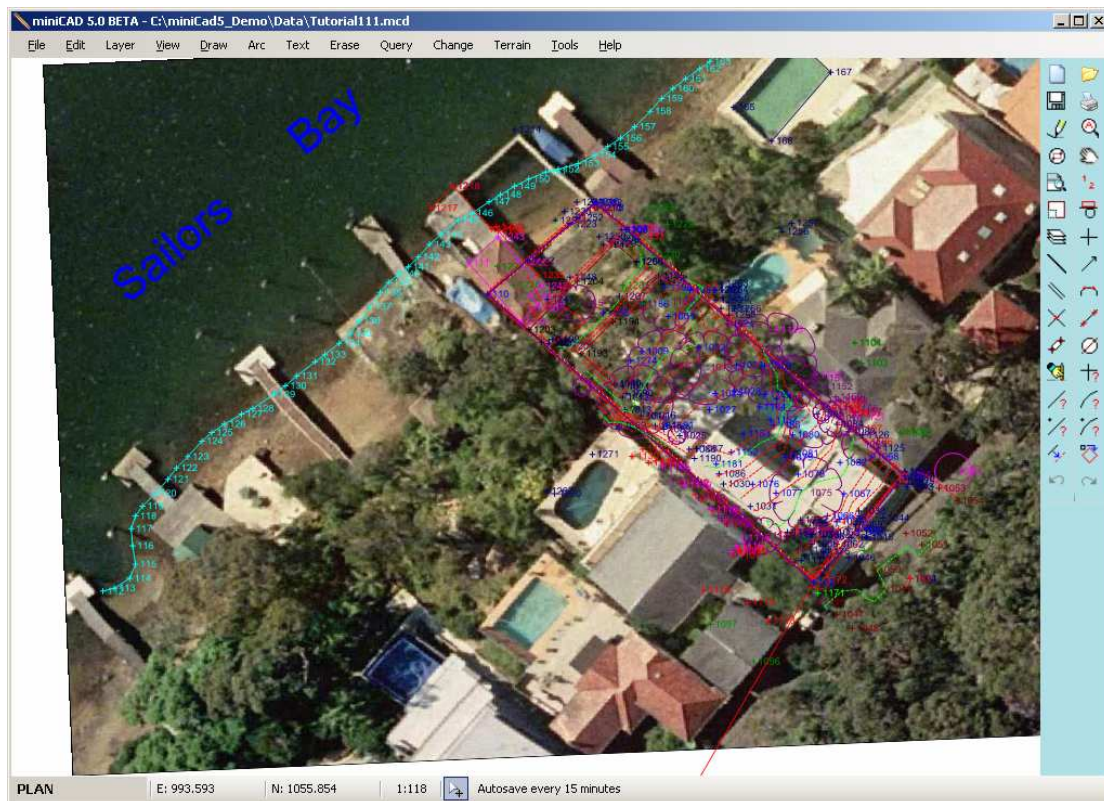


Figure 1 - The finished product

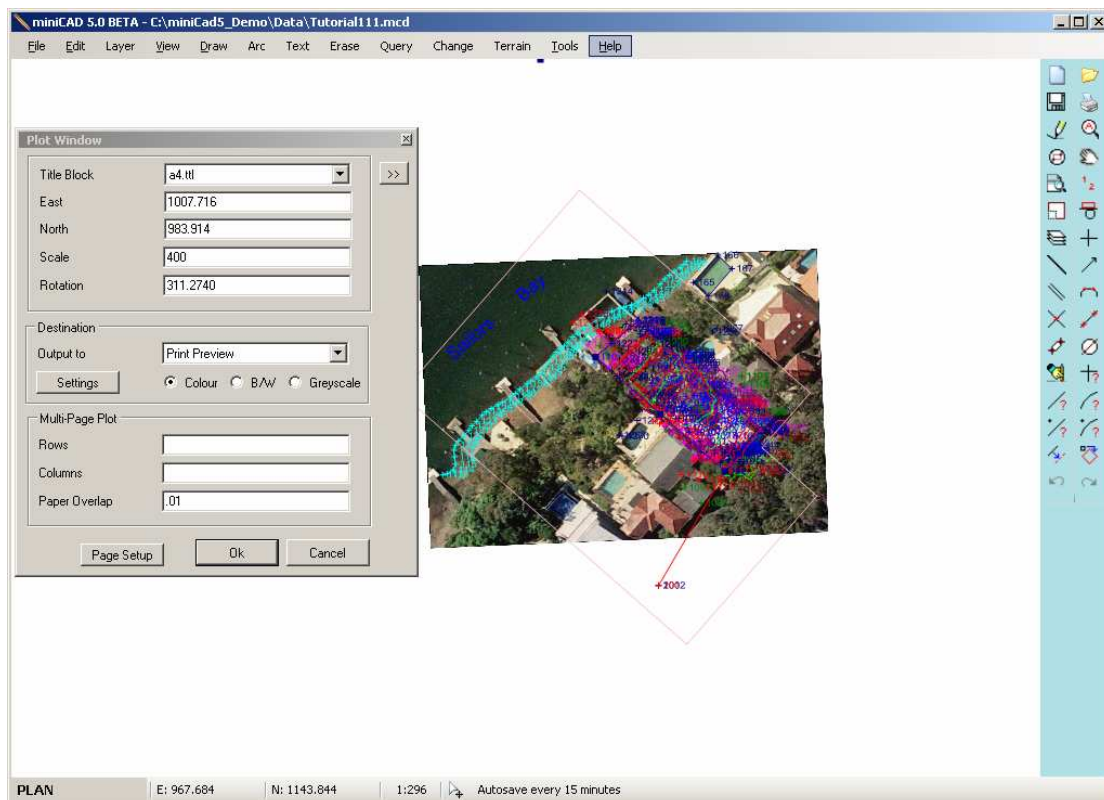
### Plotting and export to DXF

We wish to produce a final paper plan. miniCAD5 will plot directly to the printer or plotter. (however if you wish you may use a third party drafting packages such as AutoCAD).

You can also plot to multiple sheets, using variable title block text such as sheet headings, dates and page numbers.

- Open the job Tutorial1.mcd. Before we start, open the layer dialogue and set the PLAN layer's Annotation field to Yes. Make sure all other layers Annotation fields are set to No. Close the Layer dialogue.

- Zoom out a fair way to make the area to plot will fit in a small central part of the screen.
- Select File>>Plot Window.
- Select a4.ttl as the title block.
- Enter 400 as the scale. (i.e. a Scale of 1:400.)
- Place the cursor in the Rotation field and snap to the south western side boundary of the job.
- Place the cursor in the East field and click on the screen where you want the bottom left corner of the title block to be located. See figure below for more information.



**Figure 2 - Plot Window settings**

- Select the SETTINGS button on the dialogue and then ensure that your Plot settings match those in the following figures.

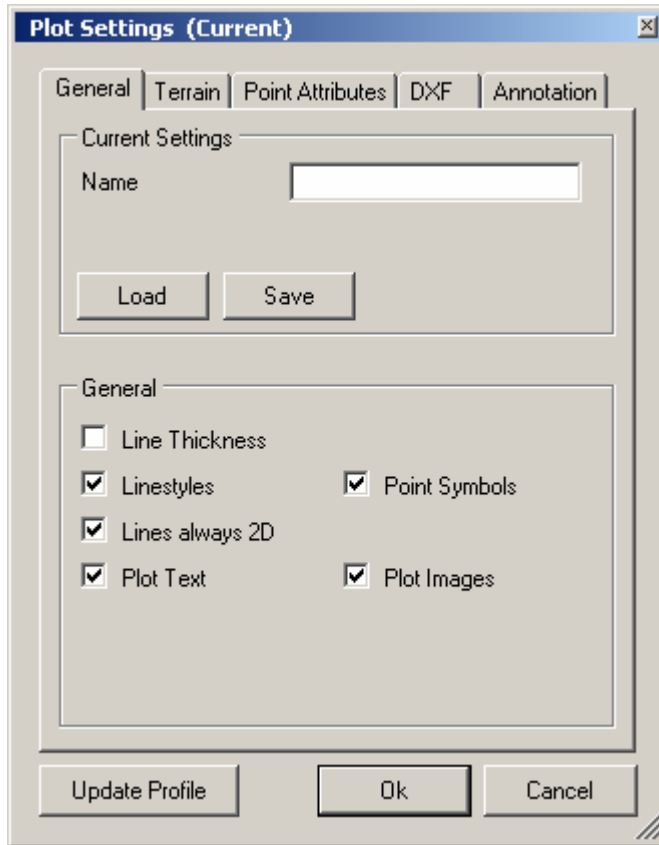


Figure 3 - Plot Settings (General Tab)

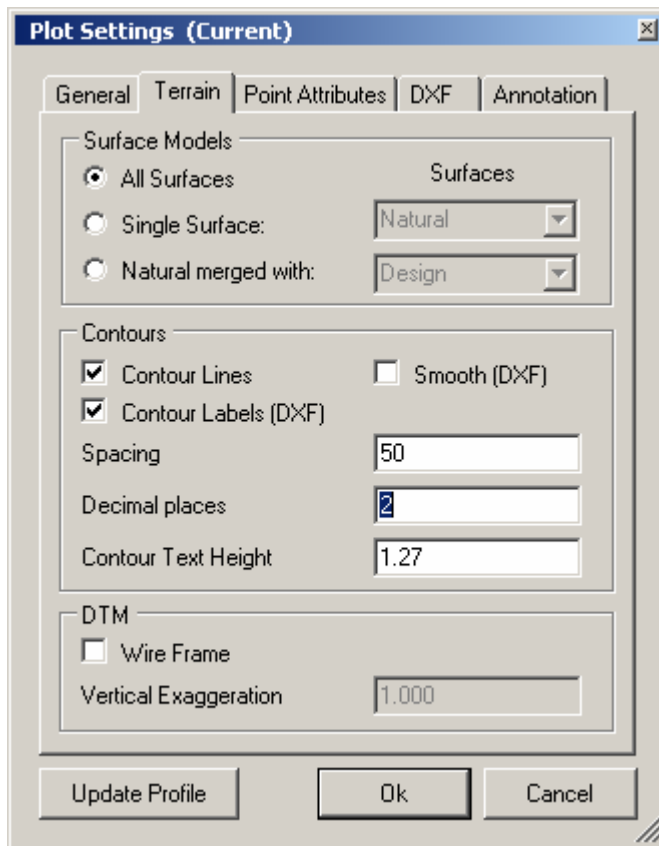


Figure 4 - Plot Settings (Terrain)

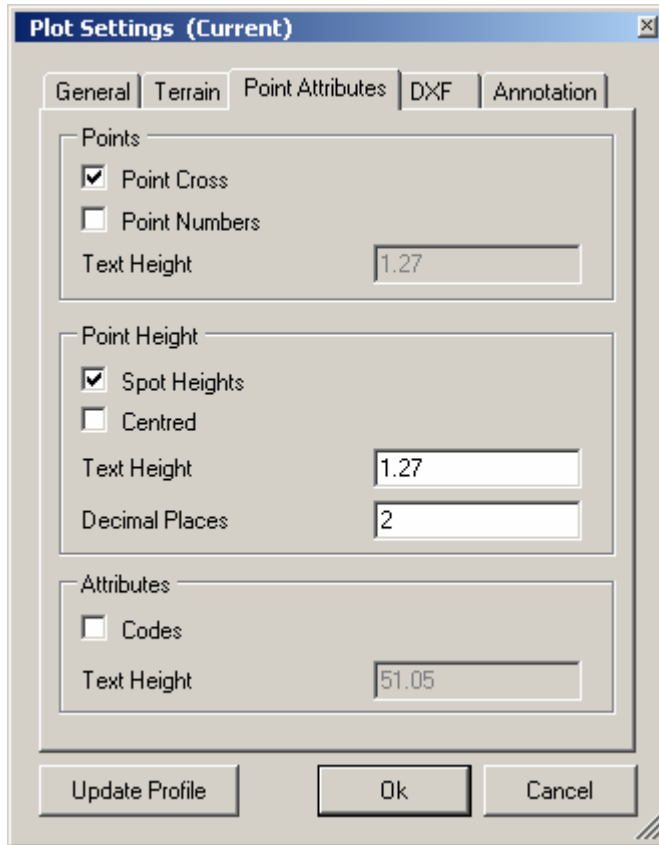


Figure 5 - Plot Settings (Point Attributes)

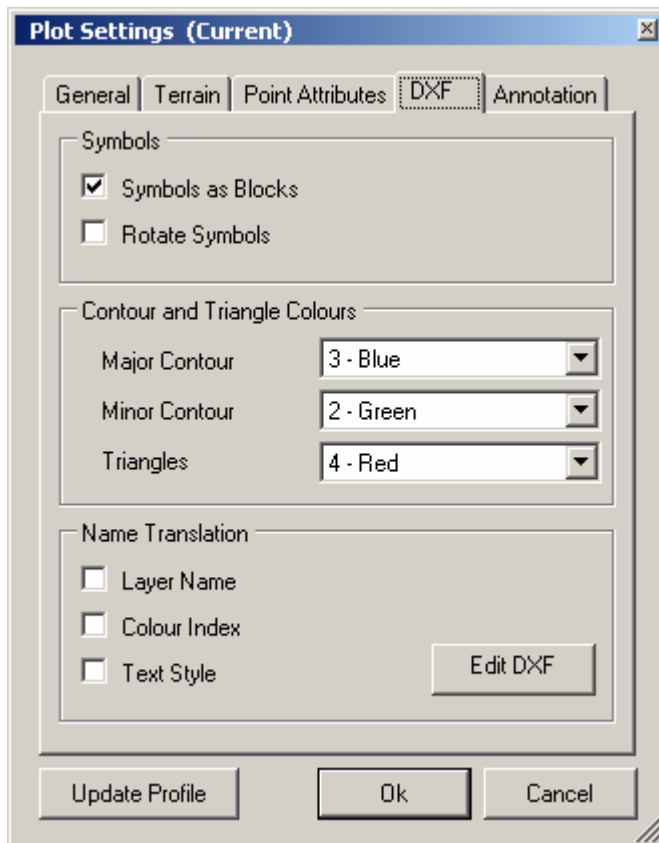


Figure 6 - Plot Settings (DXF)

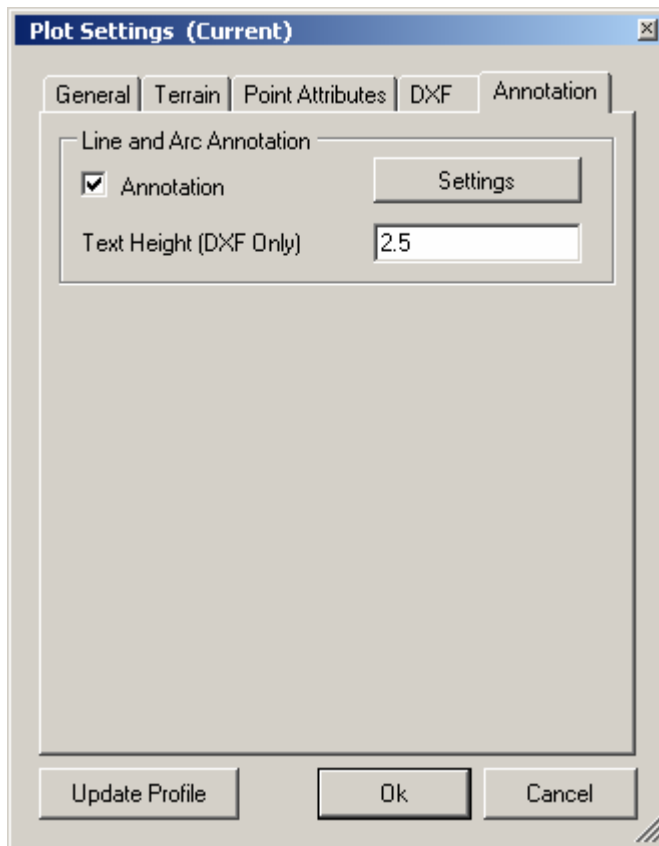


Figure 7 - Plot Settings (Annotation)

- Select the OK button to return to the Plot Window dialogue.

**Note:** Smooth contours and annotation are not displayed on the printer version only the DXF file.

- Select the PAGE SETUP button and make sure that the paper size is A4 and that it is set to Portrait orientation. See the figure below. Select the OK button to return to the Plot Window dialogue

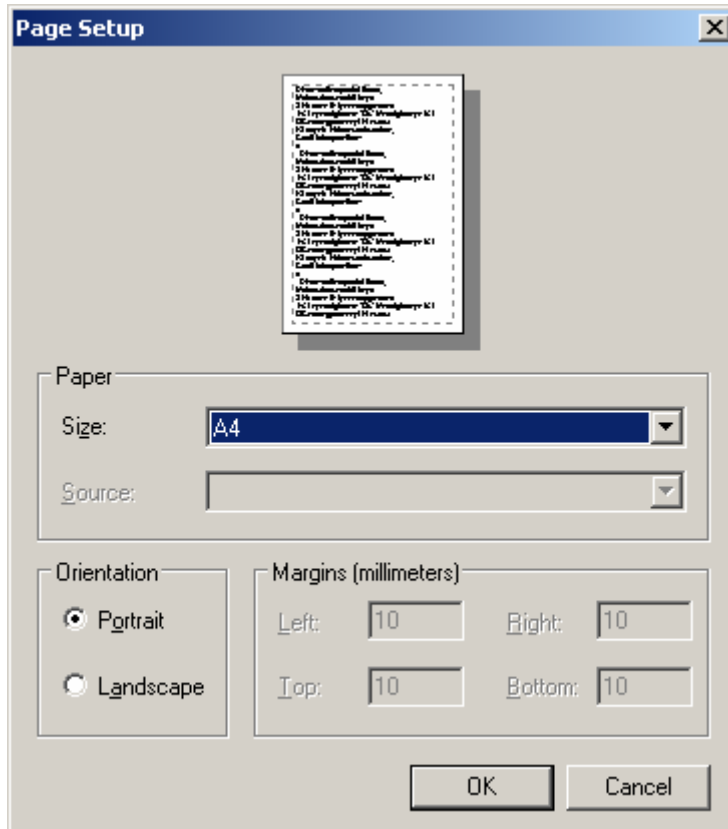


Figure 8 - Page Setup

#### About printing on Larger Sheets:

If you require to plot on larger sheets, you must select a printer capable of plotting to the required sheet size as your default printer. If you don't have the printer available you can print to a PDF writer (Printer driver) We recommend the use of PDF Creator 0.9.9 which is a freeware program and capable of printing to large format sheets in a number of graphic formats. Visit <http://www.pdfforge.org/products/pdfcreator> for more information.

To set a different default printer:

- Select File>>Printer Setup,
- Right click on the printer you require and select Set as Default Printer.
- Then select the APPLY button. See the figure below.

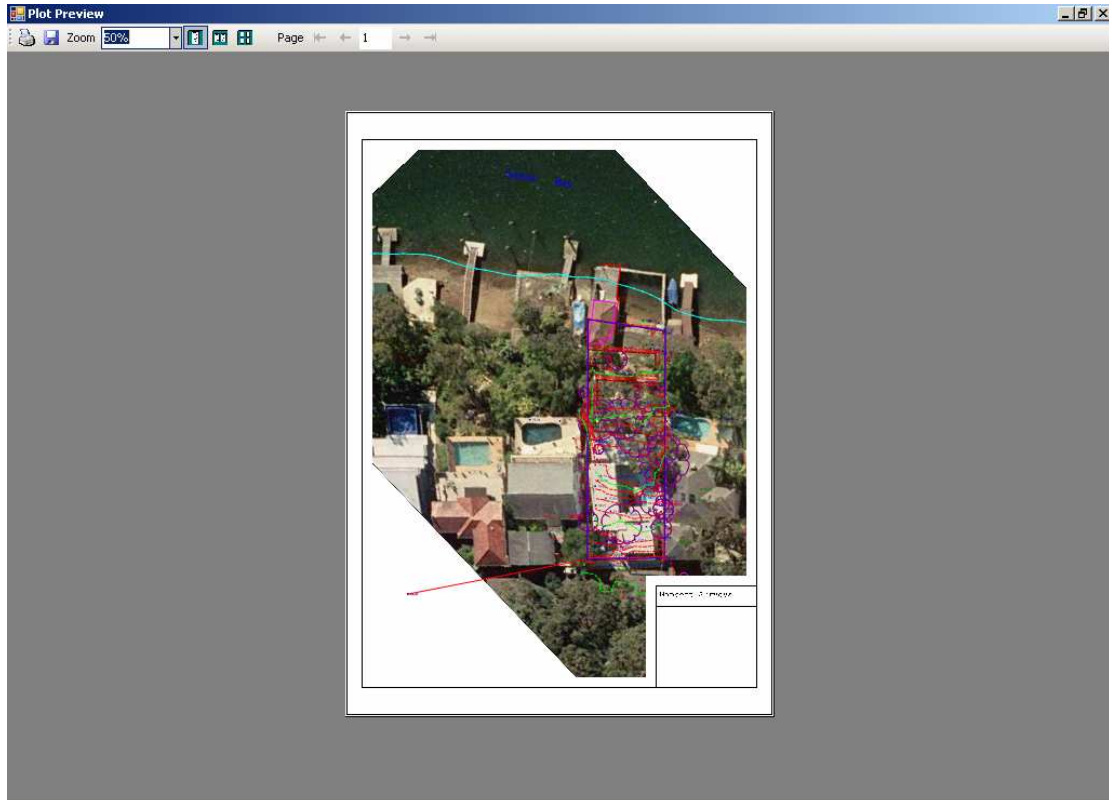


**Figure 9 - Printer Setup**

Now from the Plot Window ensure that Plot Preview and Colour are selected. Select the OK button to see the Plot Preview, shown in Figure 28 below.

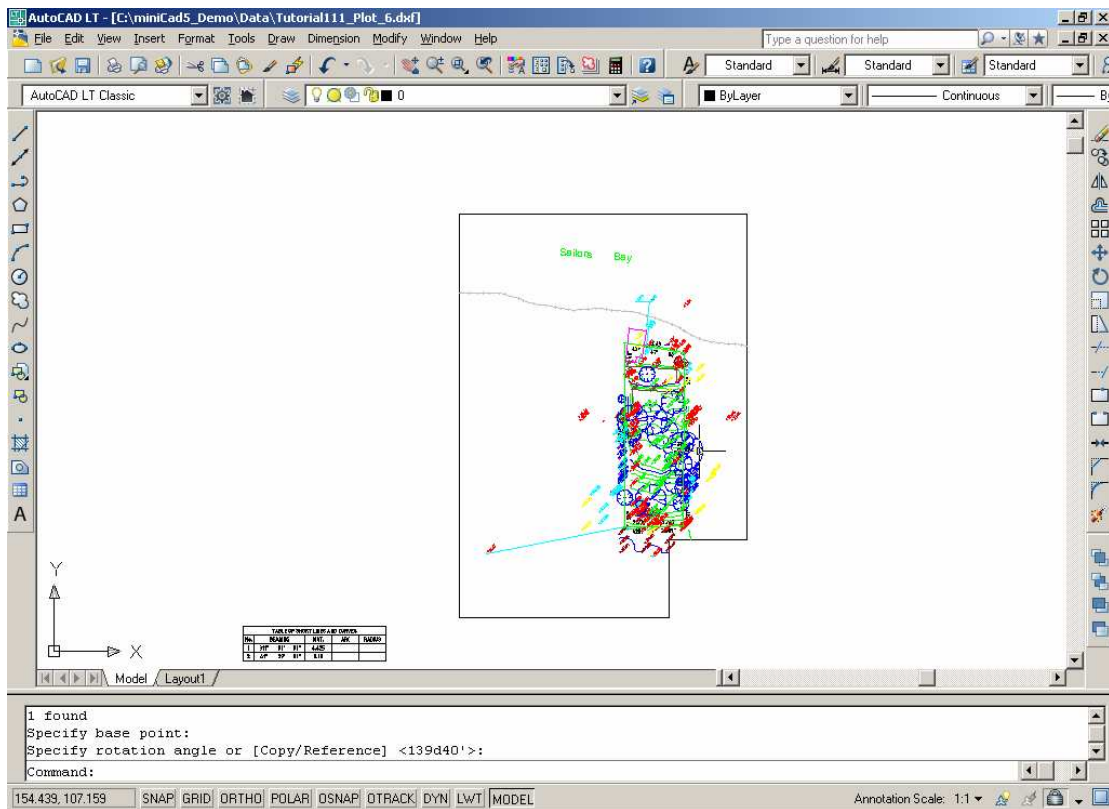
To print the preview select the Printer icon at the top left of the screen or to send to a DXF file select the Disk icon immediately to the right of the Printer icon.

When plotting a DXF file the filename that is created is displayed in the message bar at the bottom of the screen. (and the message log) If multiple sheets are selected then you will need to open the message box to get the full list of filenames created.



**Figure 10 - Plot Window**

The DXF file plot is shown, opened in AUTOCAD, below.



**Figure 11 – The miniCAD plot in AutoCAD LT**

Congratulations on completing this tutorial. By now you will have a feel as to how easy miniCAD5 is to use. You are encouraged to explore the extensive help files associated with the program and found online. Should you have further queries, don't hesitate to contact us directly.

We endeavour to take on board as many user suggestions as possible. I think you will find us a very responsive and responsible company. Enjoy!

Email: [info@mapsoft.com.au](mailto:info@mapsoft.com.au)

Website: [www.mapsoft.com.au](http://www.mapsoft.com.au)